

1) Status of the notification

Final

2) Issuer

Name PROXIMUS  
Identification number 0202-239-951

3) Reason for the notification

Acquisition or disposal of voting securities or voting rights  
Acquisition or disposal of financial instruments that are treated as voting securities

4) Notification by

A parent undertaking or a controlling person

5) Persons subject to the notification requirement

Name	Address (for legal entities)
The Goldman Sachs Group, Inc.	Corporation Trust Center, 1209 Orange Street, Wilmington, DE 19801, USA

6) Persons that dispose of voting rights (only to be filled in if art. 7 of the Law applies)

Name	Address (for legal entities)

Please continue entering the information in **part II** concerning the persons referred to in Sections 5 and 6

Part II

7) Date on which the threshold is crossed

08/11/2023 (DD/MM/YYYY)

8) Threshold that is crossed (in %)

7.5

If the holding has fallen below the lowest threshold, you have the option of not entering any numbers in Section 10

9) Denominator

338,025,135


Please enter the denominator before filling in the data

10) Notified details

A) Voting rights	Previous notification	After the transaction			
	# of voting rights	# of voting rights		% of voting rights	
Holder of voting rights		Linked to securities	Not linked to the securities	Linked to securities	Not linked to the securities
The Goldman Sachs Group, Inc.		0		0.00%	
Goldman Sachs & Co. LLC		10,902,981		3.23%	
Goldman Sachs Asset Management Holdings B.V.		364,236		0.11%	
Goldman Sachs Asset Management, L.P.		155,989		0.05%	
Goldman Sachs Asset Management International		2,161		0.00%	
Goldman Sachs Bank Europe SE		1,112		0.00%	

Subtotal		11,426,479		3.38%	
<b>TOTAL</b>		<b>11,426,479</b>	<b>0</b>	<b>3.38%</b>	<b>0.00%</b>



 Start with "groups" of holders. Add subtotals with  $\Sigma$ , and then finish with the persons who are "alone".  
 For groups, start with the ultimate controlling natural person or legal entity.  
 The totals, subtotals and % will be updated once you have clicked on **<CALCULATE>**.

B) Equivalent financial instruments	After the transaction					
Holders of equivalent financial instruments	Type of financial instrument	Expiration date	Exercise period or date	# of voting rights that may be acquired if the instrument is exercised	% of voting rights	Settlement
Goldman Sachs & Co. LLC	Securities Lending		Open	86,469	0.03%	Physical
Goldman Sachs International	Call/Put Option	08/09/2026		119,412	0.04%	Physical
Goldman Sachs International	Call/Put Option	09/09/2026		119,412	0.04%	Physical
Goldman Sachs International	Call/Put Option	10/09/2026		119,412	0.04%	Physical
Goldman Sachs International	Call/Put Option	11/09/2026		119,412	0.04%	Physical
Goldman Sachs International	Call/Put Option	14/09/2026		119,412	0.04%	Physical
Goldman Sachs International	Call/Put Option	15/09/2026		119,412	0.04%	Physical
Goldman Sachs International	Call/Put Option	16/09/2026		119,412	0.04%	Physical
Goldman Sachs International	Call/Put Option	17/09/2026		119,412	0.04%	Physical
Goldman Sachs International	Call/Put Option	18/09/2026		119,412	0.04%	Physical
Goldman Sachs International	Call/Put Option	21/09/2026		119,412	0.04%	Physical
Goldman Sachs International	Call/Put Option	22/09/2026		119,412	0.04%	Physical
Goldman Sachs International	Call/Put Option	23/09/2026		119,412	0.04%	Physical
Goldman Sachs International	Call/Put Option	24/09/2026		119,412	0.04%	Physical
Goldman Sachs International	Call/Put Option	25/09/2026		119,412	0.04%	Physical
Goldman Sachs International	Call/Put Option	28/09/2026		119,412	0.04%	Physical
Goldman Sachs International	Call/Put Option	29/09/2026		119,412	0.04%	Physical
Goldman Sachs International	Call/Put Option	30/09/2026		119,412	0.04%	Physical
Goldman Sachs International	Call/Put Option	01/10/2026		119,412	0.04%	Physical
Goldman Sachs International	Call/Put Option	02/10/2026		119,412	0.04%	Physical
Goldman Sachs International	Call/Put Option	05/10/2026		119,412	0.04%	Physical
Goldman Sachs International	Call/Put Option	06/10/2026		119,412	0.04%	Physical
Goldman Sachs International	Call/Put Option	07/10/2026		119,412	0.04%	Physical
Goldman Sachs International	Call/Put Option	08/10/2026		119,412	0.04%	Physical
Goldman Sachs International	Call/Put Option	09/10/2026		119,412	0.04%	Physical
Goldman Sachs International	Call/Put Option	12/10/2026		119,412	0.04%	Physical
Goldman Sachs International	Call/Put Option	13/10/2026		119,412	0.04%	Physical
Goldman Sachs International	Call/Put Option	14/10/2026		119,412	0.04%	Physical
Goldman Sachs International	Call/Put Option	15/10/2026		119,412	0.04%	Physical
Goldman Sachs International	Call/Put Option	16/10/2026		119,412	0.04%	Physical
Goldman Sachs International	Call/Put Option	19/10/2026		119,412	0.04%	Physical
Goldman Sachs International	Call/Put Option	20/10/2026		119,412	0.04%	Physical
Goldman Sachs International	Call/Put Option	21/10/2026		119,412	0.04%	Physical
Goldman Sachs International	Call/Put Option	22/10/2026		119,412	0.04%	Physical
Goldman Sachs International	Call/Put Option	23/10/2026		119,412	0.04%	Physical
Goldman Sachs International	Call/Put Option	26/10/2026		119,412	0.04%	Physical
Goldman Sachs International	Call/Put Option	27/10/2026		119,412	0.04%	Physical
Goldman Sachs International	Call/Put Option	28/10/2026		119,412	0.04%	Physical
Goldman Sachs International	Call/Put Option	29/10/2026		119,412	0.04%	Physical
Goldman Sachs International	Call/Put Option	30/10/2026		119,412	0.04%	Physical
Goldman Sachs International	Call/Put Option	02/11/2026		119,412	0.04%	Physical
Goldman Sachs International	Call/Put Option	03/11/2026		119,412	0.04%	Physical
Goldman Sachs International	Call/Put Option	04/11/2026		119,412	0.04%	Physical
Goldman Sachs International	Call/Put Option	05/11/2026		119,412	0.04%	Physical
Goldman Sachs International	Call/Put Option	06/11/2026		119,412	0.04%	Physical





Goldman Sachs International	Call/Put Option	04/08/2026		119,411	0.04%	Physical	-
Goldman Sachs International	Call/Put Option	05/08/2026		119,411	0.04%	Physical	-
Goldman Sachs International	Call/Put Option	06/08/2026		119,411	0.04%	Physical	-
Goldman Sachs International	Call/Put Option	07/08/2026		119,411	0.04%	Physical	-
Goldman Sachs International	Call/Put Option	10/08/2026		119,411	0.04%	Physical	-
Goldman Sachs International	Call/Put Option	11/08/2026		119,411	0.04%	Physical	-
Goldman Sachs International	Call/Put Option	12/08/2026		119,411	0.04%	Physical	-
Goldman Sachs International	Call/Put Option	13/08/2026		119,411	0.04%	Physical	-
Goldman Sachs International	Call/Put Option	14/08/2026		119,411	0.04%	Physical	-
Goldman Sachs International	Call/Put Option	17/08/2026		119,411	0.04%	Physical	-
Goldman Sachs International	Call/Put Option	18/08/2026		119,411	0.04%	Physical	-
Goldman Sachs International	Call/Put Option	19/08/2026		119,411	0.04%	Physical	-
Goldman Sachs International	Call/Put Option	20/08/2026		119,411	0.04%	Physical	-
Goldman Sachs International	Call/Put Option	21/08/2026		119,411	0.04%	Physical	-
Goldman Sachs International	Call/Put Option	24/08/2026		119,411	0.04%	Physical	-
Goldman Sachs International	Call/Put Option	25/08/2026		119,411	0.04%	Physical	-
Goldman Sachs International	Call/Put Option	26/08/2026		119,411	0.04%	Physical	-
Goldman Sachs International	Call/Put Option	27/08/2026		119,411	0.04%	Physical	-
Goldman Sachs International	Call/Put Option	28/08/2026		119,411	0.04%	Physical	-
Goldman Sachs International	Call/Put Option	01/09/2026		119,411	0.04%	Physical	-
Goldman Sachs International	Call/Put Option	02/09/2026		119,411	0.04%	Physical	-
Goldman Sachs International	Call/Put Option	03/09/2026		119,411	0.04%	Physical	-
Goldman Sachs International	Call/Put Option	04/09/2026		119,411	0.04%	Physical	-
Goldman Sachs International	Call/Put Option	07/09/2026		119,411	0.04%	Physical	-
Goldman Sachs International	Swap	13/06/2033		62,725	0.02%	Cash	-
Goldman Sachs International	Swap	04/07/2033		60,660	0.02%	Cash	-
Goldman Sachs International	Swap	01/11/2033		52,236	0.02%	Cash	-
Goldman Sachs Bank Europe SE	Call Warrant	31/12/2030		30,000	0.01%	Cash	-
Goldman Sachs Bank Europe SE	Swap	07/02/2024		21,733	0.01%	Cash	-
Goldman Sachs International	Swap	04/07/2033		14,526	0.00%	Cash	-
Goldman Sachs Bank Europe SE	Call Warrant	31/12/2030		12,815	0.00%	Cash	-
Goldman Sachs International	Swap	13/06/2033		11,730	0.00%	Cash	-
Goldman Sachs Bank Europe SE	Call Warrant	31/12/2030		6,812	0.00%	Cash	-
Goldman Sachs Bank Europe SE	Call Warrant	31/12/2030		3,800	0.00%	Cash	-
Goldman Sachs International	Swap	04/07/2033		5,955	0.00%	Cash	-
Goldman Sachs International	Swap	30/11/2023		5,403	0.00%	Cash	-
Goldman Sachs Bank Europe SE	Call Warrant	31/12/2030		5,000	0.00%	Cash	-
Goldman Sachs International	Swap	25/09/2028		4,228	0.00%	Cash	-
Goldman Sachs International	Swap	29/01/2030		3,052	0.00%	Cash	-
Goldman Sachs Bank Europe SE	Call Warrant	31/12/2030		2,500	0.00%	Cash	-
Goldman Sachs International	Swap	09/11/2026		1,901	0.00%	Cash	-
Goldman Sachs International	Swap	04/07/2033		1,736	0.00%	Cash	-
Goldman Sachs Bank Europe SE	Call Warrant	31/12/2030		1,000	0.00%	Cash	-
Goldman Sachs International	Swap	04/07/2033		643	0.00%	Cash	-
Goldman Sachs Bank Europe SE	Call Warrant	31/12/2030		200	0.00%	Cash	-
Goldman Sachs International	Swap	26/10/2033		93	0.00%	Cash	-
Goldman Sachs International	Swap	09/11/2026		54	0.00%	Cash	-
Goldman Sachs International	Swap	07/02/2024		23	0.00%	Cash	-
Goldman Sachs Bank Europe SE	Swap	08/02/2024		20	0.00%	Cash	-
Goldman Sachs International	Swap	07/02/2024		4	0.00%	Cash	-
Goldman Sachs International	Swap	08/03/2033		2	0.00%	Cash	-




**Persons subject to the notification requirement**

<u>Name</u>	<u>Address</u>	<u>Phone number</u>	<u>E-mail</u>	<u>Contact person (for legal entities)</u>
The Goldman Sachs Group, Inc.	Corporation Trust Center, 1209 Orange Street, Wilmington, DE	+44 207 774 5006	gs-reg-ops-legal-queries@	Alexandra J Wessel

**Mandatory**

<u>Name</u>	<u>Address</u>	<u>Phone number</u>	<u>E-mail</u>	<u>Contact person (for legal entities)</u>

**Invoicing data**

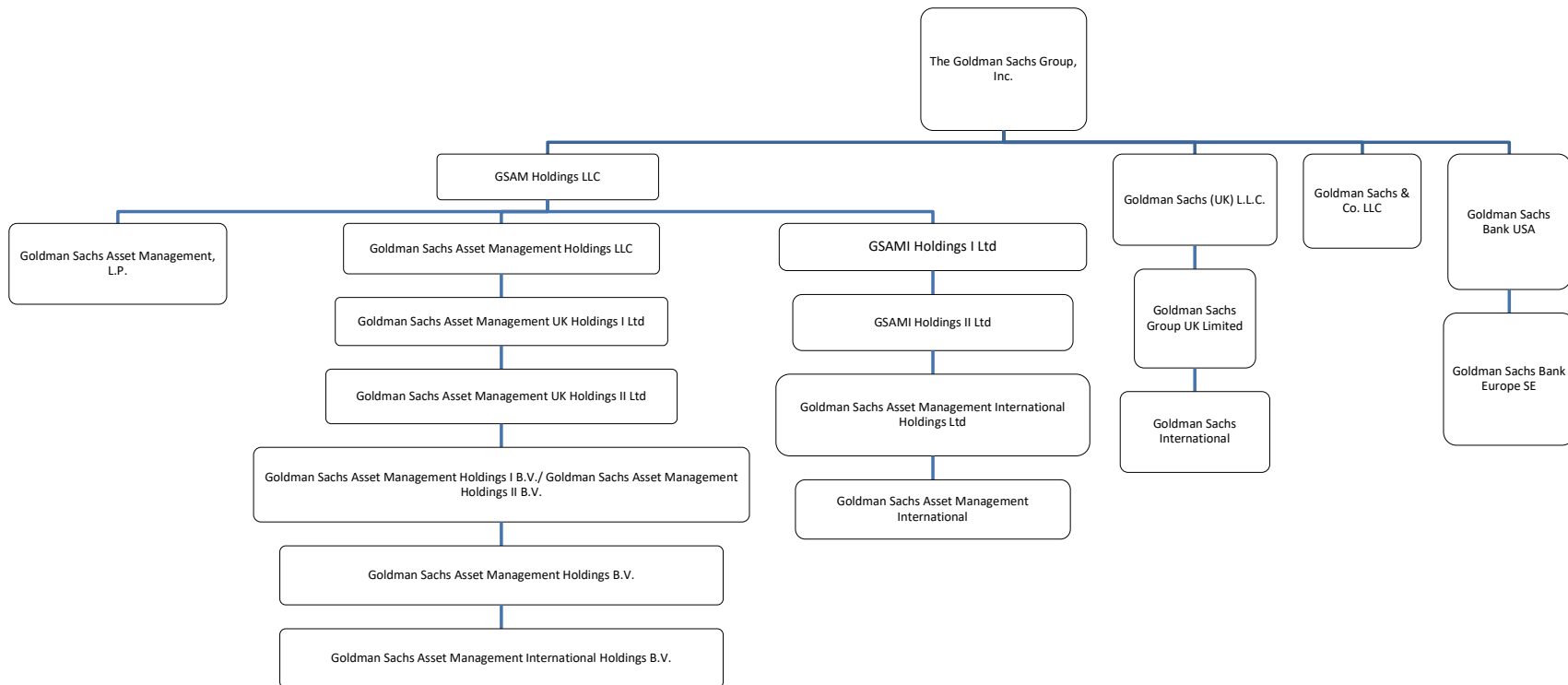
<u>Name</u>	<u>Address</u>	<u>Phone number</u>	<u>E-mail</u>	<u>Contact person (for legal entities)</u>
Goldman Sachs Bank Europe SE	Plac Europejski, 1, Warsaw 00-844, Poland	+48 22 317 4817	gs-regops-emea-position-e	Andrzej Szyszka

The personal data which you have provided to the FSMA via this form will be processed by the FSMA as set out in its [Privacy Policy](#).



Chain of Controlled Undertakings:

- GOLDMAN SACHS INTERNATIONAL IS CONTROLLED BY GOLDMAN SACHS GROUP UK LIMITED WHICH IS CONTROLLED BY GOLDMAN SACHS (UK) L.L.C. WHICH IS CONTROLLED BY THE GOLDMAN SACHS GROUP, INC.
- GOLDMAN SACHS ASSET MANAGEMENT, L.P. IS CONTROLLED BY GSAM HOLDINGS LLC WHICH IS CONTROLLED BY THE GOLDMAN SACHS GROUP, INC.
- GOLDMAN SACHS & CO. LLC IS CONTROLLED BY THE GOLDMAN SACHS GROUP, INC.
- GOLDMAN SACHS ASSET MANAGEMENT INTERNATIONAL IS CONTROLLED BY GOLDMAN SACHS ASSET MANAGEMENT INTERNATIONAL HOLDINGS LTD WHICH IS CONTROLLED BY GSAMI HOLDINGS II LTD. WHICH IS CONTROLLED BY GSAMI HOLDINGS I LTD WHICH IS CONTROLLED BY GSAM HOLDINGS LLC WHICH IS CONTROLLED BY THE GOLDMAN SACHS GROUP, INC.
- GOLDMAN SACHS BANK EUROPE SE IS CONTROLLED BY GOLDMAN SACHS BANK USA WHICH IS CONTROLLED BY THE GOLDMAN SACHS GROUP, INC.
- GOLDMAN SACHS ASSET MANAGEMENT HOLDINGS B.V. IS CONTROLLED BY GOLDMAN SACHS ASSET MANAGEMENT HOLDINGS I B.V. / GOLDMAN SACHS ASSET MANAGEMENT HOLDINGS II B.V. WHICH IS



Note: The above structure chart reflecting the chain of controlled undertakings is based on voting rights only. For the purpose of aggregation and representation, only entities that have more than 50% of the voting shares are regarded as a controlled undertaking under the substantial shareholder disclosure rules. The structure chart comprises only GS entities which are part of the notification.