

1) Status of the notification

Final

2) Issuer

Name PROXIMUS  
Identification number 0202-239-951

3) Reason for the notification

Acquisition or disposal of voting securities or voting rights



4) Notification by

A parent undertaking or a controlling person



5) Persons subject to the notification requirement

Name	Address (for legal entities)
The Goldman Sachs Group, Inc	Corporation Trust Center, 1209 Orange Street, Wilmington, DE 19801, USA



6) Persons that dispose of voting rights (only to be filled in if art. 7 of the Law applies)

Name	Address (for legal entities)
------	------------------------------

--	--



**i** Please continue entering the information in *part II* concerning the persons referred to in Sections 5 and 6

**Part II**

7) Date on which the threshold is crossed

07/05/2026	(DD/MM/YYYY)
------------	--------------

8) Threshold that is crossed (in %)

3
---

**i** If the holding has fallen below the lowest threshold, you have the option of not entering any numbers in Section 10

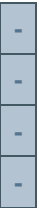
9) Denominator

338,025,135
-------------

**i** Please enter the denominator before filling in the data


10) Notified details

A) Voting rights	Previous notification	After the transaction			
		# of voting rights		% of voting rights	
Holders of voting rights		Linked to securities	Not linked to the securities	Linked to securities	Not linked to the securities
The Goldman Sachs Group, Inc.	0	0		0.00%	
Goldman Sachs Asset Management B.V.	1,720,888	1,720,888		0.51%	
Goldman Sachs International	17,202,311	0		0.00%	
Goldman Sachs Asset Management, L.P.	29,174	29,190		0.01%	



Goldman Sachs Asset Management International	125,987	125,987		0.04%	
Goldman Sachs Bank Europe SE	12,047	0		0.00%	
Subtotal	19,090,407	1,876,065		0.56%	
<b>TOTAL</b>		<b>1,876,065</b>	<b>0</b>	<b>0.56%</b>	<b>0.00%</b>

-
-
+

 Start with "groups" of holders. Add subtotals with  $\Sigma$ , and then finish with the persons who are "alone".  
For groups, start with the ultimate controlling natural person or legal entity.  
The totals, subtotals and % will be updated once you have clicked on **<CALCULATE>**.

B) Equivalent financial instruments	After the transaction						
	Holders of equivalent financial instruments	Type of financial instrument	Expiration date	Exercise period or date	# of voting rights that may be acquired if the instrument is exercised	% of voting rights	Settlement
Goldman Sachs Bank Europe SE	Call Warrant	31/12/2030		6,423	0.00%	Cash	-
Goldman Sachs Bank Europe SE	Call Warrant	31/12/2030		5,000	0.00%	Cash	-
Goldman Sachs Bank Europe SE	Call Warrant	31/12/2030		7,900	0.00%	Cash	-
Goldman Sachs Bank Europe SE	Call Warrant	31/12/2030		29,300	0.01%	Cash	-
Goldman Sachs Bank Europe SE	Call Warrant	31/12/2030		2,500	0.00%	Cash	-
Goldman Sachs Bank Europe SE	Call Warrant	31/12/2030		1,000	0.00%	Cash	-
Goldman Sachs Bank Europe SE	Call Warrant	31/12/2030		412	0.00%	Cash	-
Goldman Sachs Bank Europe SE	Call Warrant	31/12/2030		1,300	0.00%	Cash	-
Goldman Sachs Bank Europe SE	Call Warrant	31/12/2030		2,000	0.00%	Cash	-
Goldman Sachs Bank Europe SE	Call Warrant	31/12/2030		6,000	0.00%	Cash	-
Goldman Sachs Bank Europe SE	Call Warrant	31/12/2030		12,000	0.00%	Cash	-
Goldman Sachs Bank Europe SE	Call Warrant	31/12/2030		84	0.00%	Cash	-
Goldman Sachs Bank Europe SE	Call Warrant	31/12/2030		1,200	0.00%	Cash	-
Goldman Sachs Bank Europe SE	Call Warrant	31/12/2030		2,000	0.00%	Cash	-
Goldman Sachs Bank Europe SE	Call Warrant	31/12/2030		49,990	0.01%	Cash	-
Goldman Sachs Bank Europe SE	Call Warrant	31/12/2030		700	0.00%	Cash	-
Goldman Sachs Bank Europe SE	Call Warrant	31/12/2030		8,000	0.00%	Cash	-
Goldman Sachs Bank Europe SE	Call Warrant	31/12/2030		300	0.00%	Cash	-
Goldman Sachs Bank Europe SE	Call Warrant	31/12/2030		26	0.00%	Cash	-

Goldman Sachs Bank Europe SE	Call Warrant	31/12/2030		100	0.00%	Cash	-
Goldman Sachs Bank Europe SE	Call Warrant	31/12/2030		2,900	0.00%	Cash	-
Goldman Sachs Bank Europe SE	Call Warrant	31/12/2030		1,000,000	0.30%	Cash	-
Goldman Sachs Bank Europe SE	Call Warrant	31/12/2030		1,500	0.00%	Cash	-
Goldman Sachs Bank Europe SE	Call Warrant	31/12/2030		32,500	0.01%	Cash	-
Goldman Sachs International	Swap	01/04/2036		58,981	0.02%	Cash	-
Goldman Sachs International	Swap	26/11/2035		2	0.00%	Cash	-
Goldman Sachs International	Swap	17/08/2026		5,770	0.00%	Cash	-
Goldman Sachs International	Swap	16/04/2036		85,129	0.03%	Cash	-
Goldman Sachs International	Swap	09/03/2029		1,955	0.00%	Cash	-
Goldman Sachs International	Swap	05/12/2030		6,149	0.00%	Cash	-
Goldman Sachs International	Swap	17/08/2026		40,259	0.01%	Cash	-
Goldman Sachs International	Swap	17/08/2026		10,746	0.00%	Cash	-
Goldman Sachs International	Swap	16/04/2029		128,868	0.04%	Cash	-
Goldman Sachs International	Swap	08/03/2027		2,196	0.00%	Cash	-
Goldman Sachs International	Swap	17/08/2026		10,065	0.00%	Cash	-
Goldman Sachs International	Swap	17/08/2026		5,238	0.00%	Cash	-
Goldman Sachs International	Swap	07/08/2026		20	0.00%	Cash	-
Goldman Sachs International	Swap	07/05/2029		2,054	0.00%	Cash	-
Goldman Sachs International	Securities Lending	Open		1,864,151	0.55%	physical	-
Goldman Sachs & Co. LLC	Securities Lending	Open		366,000	0.11%	physical	+
<b>TOTAL</b>				<b>3,760,717</b>	<b>1.11%</b>		

 The totals will be updated once you have clicked on <CALCULATE>

TOTAL (A & B)		# of voting rights	% of voting rights
	CALCULATE	5,636,783	1.67%

11) Full chain of controlled undertakings through which the holding is effectively held, if applicable

Please refer to Annexure - Structured Chart

12) In case of proxy voting for only one GM

Holder  will cease to hold / will hold again  0 voting rights as of  (DD/MM/YYYY)

13) Additional information

With reference to the items mentioned in Section 10B:  
 "Call Warrants" and "Swaps" are held by the corresponding entities where Goldman Sachs has a long exposure.



Done at

On  (DD/MM/YYYY)

Name & capacity

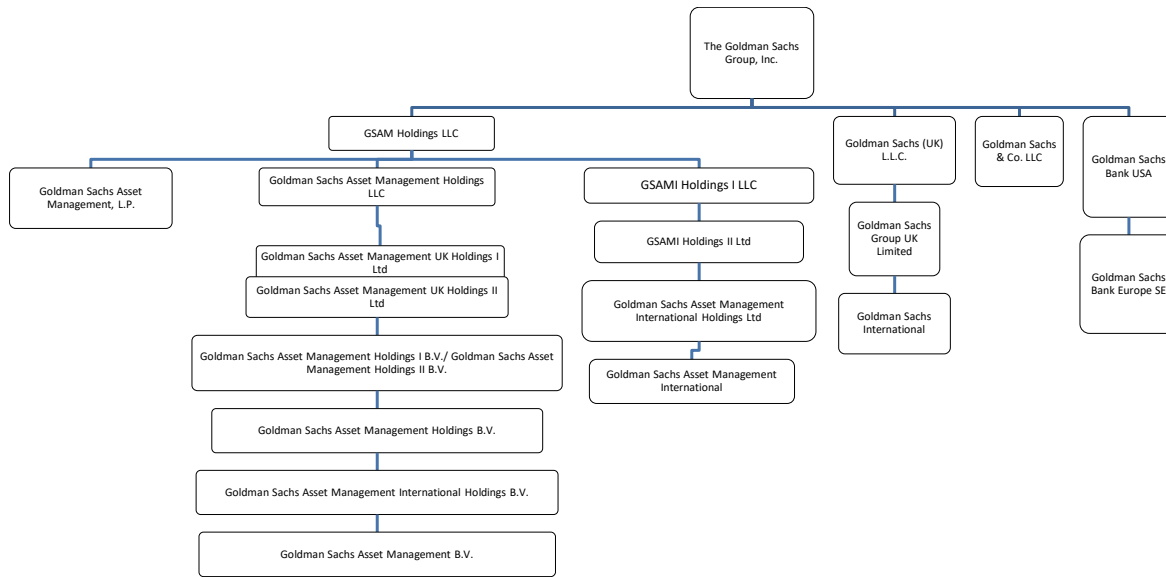
Signature 

For security reasons, the unsigned form in [xlsx](#) format should be transmitted to [trp.fin@fsma.be](mailto:trp.fin@fsma.be). You can do this manually OR if you have MS Outlook at your disposal via the "Save & Send" button.

In addition, a signed copy in [PDE](#) format should also be transmitted.

Chain of Controlled Undertakings:

- GOLDMAN SACHS INTERNATIONAL IS CONTROLLED BY GOLDMAN SACHS GROUP UK LIMITED WHICH IS CONTROLLED BY GOLDMAN SACHS (UK) L.L.C. WHICH IS CONTROLLED BY THE GOLDMAN SACHS GROUP, INC.
- GOLDMAN SACHS ASSET MANAGEMENT, L.P. IS CONTROLLED BY GSAM HOLDINGS LLC WHICH IS CONTROLLED BY THE GOLDMAN SACHS GROUP, INC.
- GOLDMAN SACHS ASSET MANAGEMENT INTERNATIONAL IS CONTROLLED BY GOLDMAN SACHS ASSET MANAGEMENT INTERNATIONAL HOLDINGS LTD WHICH IS CONTROLLED BY GSAMI HOLDINGS II LTD. WHICH IS CONTROLLED BY GSAMI HOLDINGS I LLC WHICH IS CONTROLLED BY GSAM HOLDINGS LLC WHICH IS CONTROLLED BY THE GOLDMAN SACHS GROUP, INC.
- GOLDMAN SACHS BANK EUROPE SE IS CONTROLLED BY GOLDMAN SACHS BANK USA WHICH IS CONTROLLED BY THE GOLDMAN SACHS GROUP, INC.
- GOLDMAN SACHS ASSET MANAGEMENT B.V. IS CONTROLLED BY GOLDMAN SACHS ASSET MANAGEMENT INTERNATIONAL HOLDINGS B.V. WHICH IS CONTROLLED BY GOLDMAN SACHS ASSET MANAGEMENT HOLDINGS B.V. WHICH IS CONTROLLED BY GOLDMAN SACHS ASSET MANAGEMENT HOLDINGS I B.V. / GOLDMAN SACHS ASSET MANAGEMENT HOLDINGS II B.V. WHICH IS CONTROLLED BY GOLDMAN SACHS ASSET MANAGEMENT UK HOLDINGS II LTD WHICH IS CONTROLLED BY GOLDMAN SACHS ASSET MANAGEMENT UK HOLDINGS I LTD WHICH IS CONTROLLED BY GOLDMAN SACHS ASSET MANAGEMENT HOLDINGS LLC WHICH IS CONTROLLED BY GSAM HOLDINGS LLC WHICH IS CONTROLLED BY THE GOLDMAN SACHS GROUP, INC.
- GOLDMAN SACHS & CO. LLC IS CONTROLLED BY THE GOLDMAN SACHS GROUP, INC.



Note: The above structure chart reflecting the chain of controlled undertakings is based on voting rights only. For the purpose of aggregation and representation, only entities that have more than 50% of the voting shares are regarded as a controlled undertaking under the substantial shareholder disclosure rules. The structure chart comprises only GS entities which are part of the notification.